

The Glenfarg Newsletter

Issue 237 August 2018



Inside this issue

The Glenfarg Gala - Ducks on the Pond
Wilderness Country - Arngask Champions
Suggested Donation £1

Contents

Contacts.....	3
Editorial.....	5
Diary of Events.....	7
Arngask Church News	10
Robin Lambie's Tree.....	12
Glenfarg Cinema.....	14
Ducks On The Pond.....	16
W.R.I.....	21
Cubs & Scouts Camp.....	22
Friends Of Wallace Park.....	26
Poetry Corner.....	29
Wilderness Country.....	30
Glenfarg Gala	34
Arngask Show Jumping.....	40
The Old Gits.....	42
Glenfarg Folk Club.....	44
Scouts Canoeing.....	46
Leigh Smith.....	48
Glenfarg CC Minutes.....	53
General Information.....	72

The views expressed by contributors to this newsletter are entirely their own. Publication within this newsletter does not imply that the Editors or Community Council agrees with, or supports, those views. The editors will not be held responsible for any factual inaccuracies, or incorrect inferences drawn.

Advertise In The Glenfarg Newsletter

You can advertise in the Newsletter for very reasonable rates as below which are annual i.e. 6 issues.

Full Page £70 per annum

Half Page £35

Quarter Page £20

Single issue advert prices available on request.

Advert enquiries should be made by initially contacting the editorial team.

Editor

newsletter@glenfarg.org
Robin Watson 830 355

Treasurer

Daniel Horsman 830 067

Distribution

Glenfarg Village Store 830 201

Cover Photograph Editor

DEADLINE FOR NEXT ISSUE

We always try our best to make sure that your newsletter is available promptly at the start of every even month. If you would like to contribute to the next issue, please inform us with details by the 1st of September to allow us adequate time to plan the issue. Contributions should reach us by 15th of September. **Thank you.**

Contacts

Service/Organisation	Contact Name/ Email Address	Telephone
Community Council	Chairperson: Margaret Ponton	830 611
	Secretary: secretary@glenfarg.org	830 817
P&K Councillor	Cllrs. Barnacle, Watters, Purves and Robertson	See P&K website
Police	Non emergency contact number	101
	Crimestoppers	0800 555 111
Household Utilities	Scottish Water Helpline	0800 0778 778
	Scottish Hydro Electric Helpline	0800 300 999
Dog Warden	Kirsteen Mackenzie	01738 476476
PA Contact	Mark Crossey	830 201
Arngask Church	Bill Macpherson (Session Clerk) Session.Clerk@ada-church.org.uk	830 430
Arngask School	Marie Lyon (Head Teacher)	867 250
Accordion & Fiddle	Russell Robertson	830 642
Baby & Toddlers	Catherine Mason	07583 022 608
Badminton Club	Alan Clark	830 246
Dance Connect	Rachel Webb	07760 972 359
Beavers	Christine Morton	830 210
Bowling Club	William Coventry glenfargbc@gmail.com	830 529
Bridge Club	Sheila Harley	830 319
Cubs	Robert Morton robert.morton1@tesco.net	830 210
Curling - Men's	Lorne Findlay	830 441

Curling - Women's	Margaret Jenkins	830 453
Folk Club	David Aird	830 370
Football	Alan Fairweather	830 851
GDIB	Kate Armstrong	830 343
Glenfarg Community Cinema	Janet Watson	830355
Glenfarg Oil Buying Syndicate	Tom McAulay glenfargobs@gmail.com	07786 705261
Knit & Natter	Ineke Watt	830 345
Kinross-shire Time Exchange	Linda McKeen time-exchange@kinross.cc	07469 758 984 07510 380 603
Ladies' Badminton	Annette Eadie	830 547
Neighbourhood Watch	Linsey Penman	830549
Old Folks Association	Christian Meldrum	830 437
Rainbows, Brownies & Guides	Jan Pedley glenfargbrownies@gmail.com	830 195
Red Cross	British Red Cross, Perth	0844 412 2808
Riding for the Disabled	Angela Stocks	830 262
Scouts	Robert Morton robert.morton1@tesco.net	830 210
SWI	Margaret Scott	830369
Tennis Club	Tim Corcoran tim@taraw.plus.com	830 879
Village Hall	Tanya McKibbon villagehallbookings@gmail.com	07984 275756
Website	Janet Watson <i>editor@glenfarg.org</i>	830 355
Wine Club	Steve Mee	830 395
Zumba	Gale Paterson	07823 334 476

Editorial

What a brilliant day at the Gala. The sun was shining in a spell of weather which to say the least is unusual in these parts. Check out the centre pages for pictures taken on the day and information on how to apply for funding.

Congratulations to Arngask primary for their magnificent performance in the Kilgraston School's Scottish Equestrian Championships. Read about their achievements on page 40.

Glenfarg Community Cinema starts up the new season on the 14th of September with 'The Greatest Showman'. Details can be found on the Cinema page.

Mark Crossey would like to propose a new item for the newsletter. He says. "Since our book club is no longer running I have nobody to talk books with. I think we should take it in turns to write a review on a book that we have enjoyed. Nothing too intellectual, more fun reads. Please get in touch if you would be up for it and please forward this to any of your reading friends who might be interested." I think this is a great idea and would look forward to publishing the reviews.

Jim Ashton writes on his travels in the north west corner of Scotland in his piece called the 'Wilderness Country' and Philip Ponton tells of the trials and tribulations concerning the ducks on the Glenfarg pond.

As usual thanks to all our regular contributors



ANDREW MILLER FIREPLACES



Bespoke & personal service

SUPPLY or SUPPLY & INSTALL

GAS / ELECTRIC / MULTIFUEL / WOODBURNING STOVES

**GLASS / GRANITE / SLATE / TILED HEARTHES TO SUIT
STOVES or FIRE SURROUNDS**

GAS / ELECTRIC / FIRES / SUITES

**LARGE SELECTION OF VARIOUS TIMBER and PAINT FINISH
FIRE SURROUNDS / BEAMS and SHELVES**

GRANITE / LIMESTONE / MARBLE / FIRE SURROUNDS

**SHOWROOM by APPOINTMENT
27-29 WESTERLOAN
MILNATHORT
KY13 9YH**

Email: millerfireplaces@btconnect.com
Tel 01577 862173
Mobile 07870 284868

Glenfarg Grapevine

Do you feel 'out of the loop'? Are you missing out on village news? Or are you an organiser, needing to reach as many people locally as possible?

Then you need to make use of ALL our wonderful means of communication. Please remember, these are run by volunteers. They will not copy from one medium to another - you need to make use of them all.

Community Website

www.glenfarg.org

for all the information about our village
club contacts / service dates / hall calendar / group and CC minutes etc

Facebook

join the Glenfarg Grapevine closed group
for instant community news / details of events

Email Service

sign up via the community website
to receive a weekly email of upcoming events
plus emergency announcements

Noticeboards

The shop window is the place for general posters
and the CC noticeboard (round the corner) for CC and Perth Council news

Grapevine News for Non-Computer Users

we are now posting a printout of the Grapevine Email Service
on the CC Noticeboard

Newsletter

You're already reading it!

A Village Hall for All

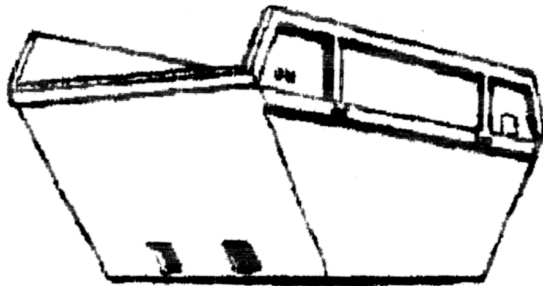
A quick guide to regular village hall activities. Does anything take your interest?

Day	Time	Organisation
Monday	9.30am - 11.30am	Baby & Toddler Group
	6.00pm - 7.30pm	Cubs
	8.00pm - 10.00pm	Ladies' Badminton
Tuesday	5.45pm - 6.45pm	Beavers
	7.00pm - 8.00pm	Zumba Fitness
Wednesday	6.00pm - 7.00pm	Rainbows
	6.00pm - 7.30pm	Brownies
	6.00pm - 8.00pm	Guides
	8.00pm - 10.00pm (In winter)	Badminton
	7.00pm - 11.00pm	Accordion & Fiddle Club
Thursday		
	7.30pm - 9.00pm	Scouts
2nd Thursday Sept to May	7.30pm	WRI
Friday	10.00am - 11.00am	Chair Exercise

To check on the Village Hall bookings, go to the village website
www.glenfarg.org
 and look at the on-line calendar under 'Hire the Hall'



Binn Skips



Binn Farm • Glenfarg • Perthshire
PH2 9PX

Tel. 01577 830 833

Fax. 01577 830 488

Church News



We are delighted to welcome the **Rev Susan Thorburn** as our new Locum Minister. Susan joined us last month and can be contacted by Email: Minister@ada-church.org.uk or telephone 01821 642681

Our new Pastoral Team are now up and running and they can be contacted via Gill Boardman on 01738 850940

'What a Wonder-Full World' Perth Presbytery are organising this event which is being held in Perth Theatre on the 3rd Nov 2018 Full details on the website. Tickets can be booked via Alex Johnston on 01577 830776 or direct from the Box Office

Reminder that the Church Hall is available for hire and enquiries should be addressed to Sheona Reid 01577 830388

For more information contact the Session Clerk,

Bill Macpherson on 01577 8730430 or Session.Clerk@ada-church.co.uk



MAKE YOUR CHILD'S DEVELOPMENT MORE FUN!

DISCOVER RUGBYTOTS

Our dynamic weekly play sessions enable **boys and girls aged 2-7** to develop their social and physical skills in a fun, positive environment.

For more details, just call or email:

0345 313 0288

samaan@rugbytots.co.uk



rugbytots.co.uk

The world's favourite rugby play programme

Silver Lining Hair Studio

Ladies, Gentlemen, Children, Students, Seniors

Bridal Hair a Speciality

Kebelo ADVANCE Specialist

Upstairs at Jamesfield Centre, (Lift available)

Perth Road, Abernethy, KY14 6EW

Telephone: 01738 851110

(Walk In Customers Welcome)

Send a message via Via Facebook or Instagram – typically replies within an hour

www.silverlininghairstudio.uk

The Robin Lambie Tree



The occasion was the scout group celebration of scouting and AGM on May 25th 2018, at which Robin stood down as chair of the Group Executive, thus bringing to an end a lifelong membership of scouting as man and boy. In Glenfarg, Robin was responsible, along with Sir Lachlan Mclean, in the re-establishment of scouting in the village about 42 years ago

when he became scout leader. After a number of years, Robin stood down and became the group chairman, where he used his energy and expertise to support leaders and parents in the running of the scout group. This enabled many young people from Glenfarg to enjoy and benefit from scouting for over 4 decades.

The oak tree has been planted in appreciation of Robin's contribution to scouting, and in the hope that it will similarly become a landmark in the community.

AVON CALLING!

*37 years and still
DING DONGing in Glenfarg!*



*Many thanks to all my customers, past and present
Cosmetics, toiletries, perfume, gifts
delivered to your door*

I can deliver a brochure, or you can go to
www.janmakeup.co.uk,
place your order and choose whether to have it delivered direct
(for a small fee) or for free by me.

If you would like me to call, or for more information, contact

Jan Macpherson, Lyndhurst, Ladeside
01577 830430, 07709 015305
jan@janmakeup.co.uk

FERRIER & MACKINNON

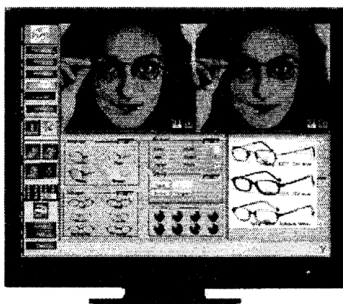
OPTOMETRISTS

74 High Street, KINROSS KY13 8AJ Tel: 01577 864 009
27/29 Chalmers Street, DUNFERMLINE KY12 8AT Tel: 01383 721 502

We are a family firm of Optometrists dedicated to professional, quality eyecare.

Introducing our new

FRAME
IMAGING
SYSTEM



SEE YOURSELF
WEARING A FRAME
BEFORE YOU
ORDER ANY
SPECTACLES!

WHY NOT POP IN FOR A
DEMONSTRATION - WE
WOULD BE PLEASED TO
SEE YOU.

Opening hours: Monday to Friday 9.00am - 5.30pm
Saturday 9.00am - 5.00pm

Glenfarg Community Cinema

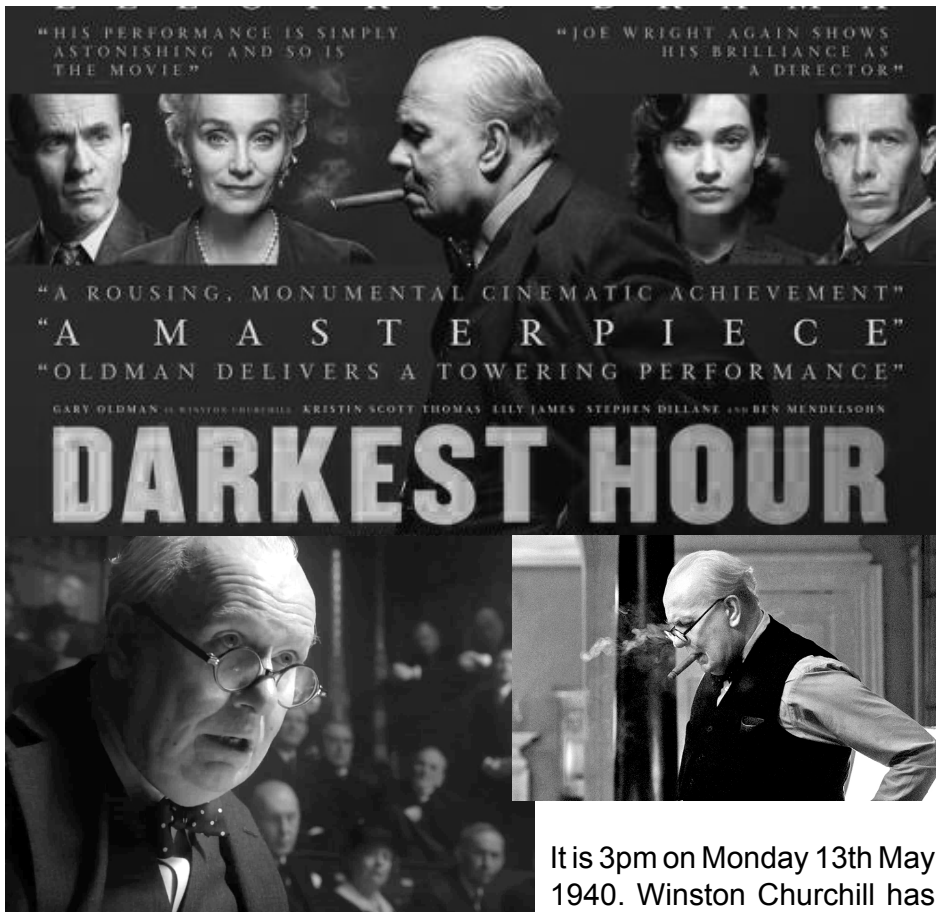


The new Glenfarg Community Cinema season is upon us and there are exciting movies to show in the new schedule.

So here are the first two. **On Friday September 14th**

The Greatest Showman is a 2017 American musical film directed by Michael Gracey in his directorial debut, written by Jenny Bicks and Bill Condon and starring Hugh Jackman, Zac Efron, Michelle Williams, Rebecca Ferguson, and Zendaya. The film is inspired by the story of P. T. Barnum's creation of the Barnum & Bailey Circus and the lives of its star attractions.

Phineas Taylor Barnum started his career by opening a wax museum but he soon shifted focus to the unique and peculiar, introducing extraordinary, never-seen-before live acts on the circus stage. Some will call Barnum's wide collection of oddities, a freak show; however, when the obsessed showman gambles everything on the opera singer Jenny Lind to appeal to a high-brow audience, he will somehow lose sight of the most important aspect of his life: his family. Will Barnum risk it all to be accepted?



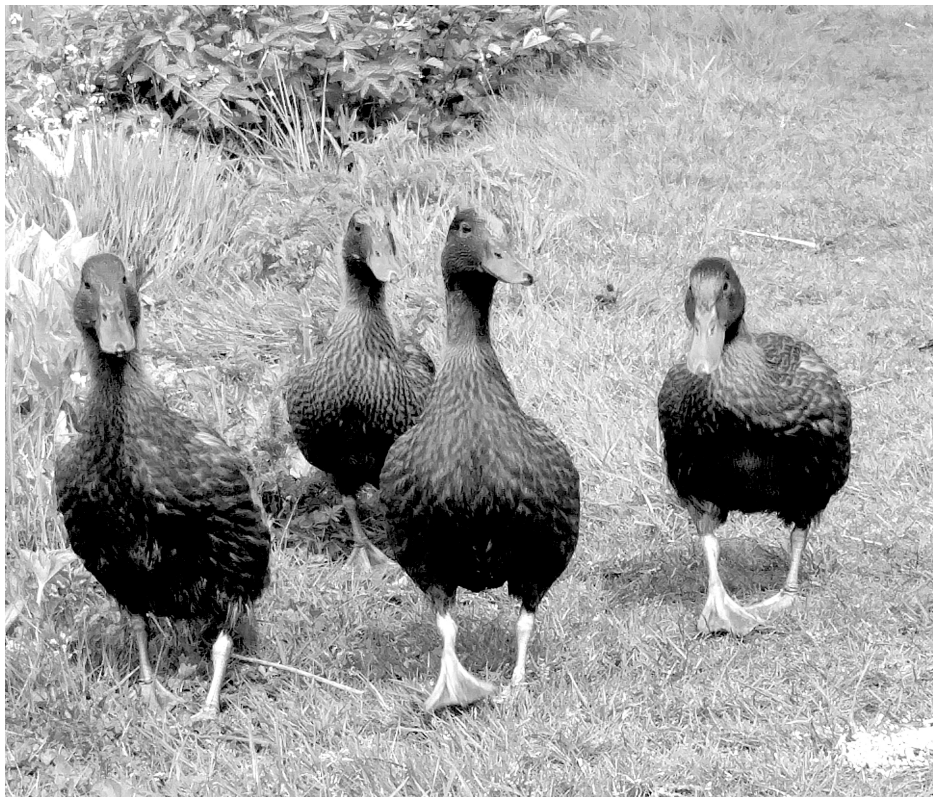
It is 3pm on Monday 13th May 1940. Winston Churchill has just made his first speech as prime minister. He has announced that he has 'nothing to offer but blood, toil, tears and sweat' pledging himself to a policy of waging war with the single aim of victory at all costs. Our view of that moment is coloured by hindsight and by our knowledge of how the victory was achieved. No such luxury was granted to Churchill at the time - things could only get worse - much worse.

Darkest Hour is a one man show for Gary Oldman (Oscar for best actor in a leading role) and what a show it is. Churchill, by way of Darkest Hour, hands the actor some of the best speeches of his career, and Oldman brings them vividly to life.

Showing on Friday October 12th

Ducks On The Pond

The story so far



In June 2017 a small group of people introduced ducks to the village green and pond. Why? For no other reason than to give pleasure to people who visit the pond. Let's face it; a pond without ducks is like a pub with no beer. But that is another story! Besides, the pond historically was populated with wild ducks which came and went, so nothing radical was happening.

Four Khaki Campbell ducklings were introduced, a house purchased and a run made to keep them safe. All the advice given was that it is essential the ducks were put inside every night. If left out the chances

of becoming prey to predators is very high. This is the part that consumes many, many man hours. At dusk, every single day of the year, somebody goes to the pond to coax the ducks inside, usually by putting a little food inside the run. Sometimes this works and other times it doesn't! They can be fickle critters to say the least. If they are being obstinate it is not uncommon to have two or three volunteers clucking and cooing, floating a ball on a long pole to encourage them in the right direction and even wading in the water waist deep to shoo them in!

Every morning someone attends the pond to open the house and run and feed them. The house needs to be regularly cleaned and fresh litter put in to make it a nice and welcoming habitat.

So why do we "lose" ducks I hear you say? Without exception it is because they have not been shut in at night simply because they refused to go in. If there have been lots of visitors throughout the day and they have been well fed they may not be hungry at bedtime. We have also noticed that they can be upset and nervous if there is an event in the hall and many people have been on The Green socialising. Another factor can be wild Mallard ducks visiting the pond and that upsets the routine of ours.

The initial batch of four ducks survived for just less than one year with the experts telling us we did well to keep them for that length of time. With that encouragement we soldiered on undaunted. A new run was constructed to give a wider entrance and more room.

In May this year we introduced four more Khaki Campbell ducklings who initially seemed more obedient than the others and went inside every night without too much effort. But that all changed when a Mallard with half a dozen ducklings arrived on the scene and upset the apple cart. No matter what we did our ducks would not go inside, instead they floated around the small island where the others were. It was very interesting to watch the interaction between them all and

very odd that the Mallard took to flying off every night seemingly abandoning her offspring.

But the inevitable happened, ducks left out at night are prey to predators and one by one three of ours and some of the ducklings became supper! There was not much we could do about this although we have now installed two Predator Eyes. These blink two red lights after dusk and work on the basis a predator will keep away if they think another is in the area.

So where are we now? Sadly there is just one of our Khaki Campbell surviving, so they have not survived as long as the others. Also the Mallard lost all of her offspring. The positive thing is that the Mallard and our remaining duck appear to be soul mates and are always together. The Mallard can even be coaxed into the run at night but ours is as obstinate as ever and remains on the water. Who knows how long they will survive?

The big question is, do we persevere and get more ducks? My personal opinion is' "If you keep doing things the same way, you will end up with the same result". In other words, if we can't provide a safe environment with physical protection from predators, is it worth carrying on?

On the other hand the amount of extremely positive comments we receive saying how lovely it is to have ducks back on the pond is encouraging indeed. What are your views? We would love to hear them so please do let us know. Phone, Facebook, e-mail and even chatting will work for us.

Philip Ponton, on behalf of The Duck Team.
philp.ponton@btconnect.com Telephone 830611

JAMESFIELD FARM SHOP



**CELEBRATING OVER 30 YEARS CHEMICAL FREE
FRESH FROM OUR FARM TO YOUR PLATE**

Fresh Organic Produce

Homemade Baking

Delicious Steak Pies – Can be made to order

Mr C's Traditional Award Winning Pies

Highland Drovers & Puddledub Meats

Cairn O' Mohr Wines & Organic Wines and more

Fair Trade Products & Handcrafted Gifts

**RESTAURANT WITH VIEWS OF THE TAY ESTUARY
- Try Our New Menu -**

Traditional and Delicious Home Cooked Food

Vegetarian & Vegan Food Available

Mon – Sat 9.00am – 5.00pm Sun – 10.00am – 5.00pm

Jamesfield Farm Shop and Farmhouse Kitchen

By Abernethy, Cupar, KY14 6EW

Tel: 01738 850 498 Email:

jamesfieldfarm@btconnect.com

<https://www.facebook.com/jamesfieldfarmshopandrestaurant>

www.jamesfieldfarmshopandrestaurant.co.uk





Gain a clear perspective on your financial future

Proud to support Glenfarg Tennis Club

We provide a comprehensive wealth management service, offering specialist face-to-face advice tailored to you. Our services include:

- Investment Planning
- Retirement Planning
- Inheritance Tax Planning
- Intergenerational Planning

For further details please contact:

AS Wealth Management

Mob: 07970 668515 | Email: andrew.stewart@sjpp.co.uk
www.as-wealth.co.uk

H2SJP28474 03/18

Glenfarg W.R.I.



The first meeting of the 2018/19 session takes place on the 13th September in the village hall. Our speaker for the night is Corrinne McRaw of Light up my Heart in Milnathort who will demonstrate many crafts.

Competitions-- Small Article in Patchwork; Filled Fatless Sponge; Flower of the month.

Subscription for this year is £30 payable in September or option to pay £15 in September and January. No tea money in September.

Visitors Welcome £4

Dates for the future:

11th October: Visiting Institute Cliesh

Competitions - Photograph My Garden; Fruit Fool; Flower of the Month.

8th November: Jane Sanderson will give a talk on Aloe Vera and also her trip to Kilimanjaro.

Competitions- Knitted Hat; Fruit Loaf; Flower of the Month

Fundraiser 19th October: Beetle Drive in Village Hall
7pm. All Welcome.

Adults £3.50 Children £2

Cub And Scout Camp

Before the kit was packed into the minibus the cubs and scouts were asked to find their waterproofs and put them to the top of their packs. All the kit was packed into the cars and minibus along with the 18 cubs and scouts and we headed to the scout campsite near Callendar on the shores of Loch Venacher. As expected it was raining by the time we got there and the participants were advised to put something waterproof on their feet, preferably wellies as well as waterproof jackets.

Suitably clad the participants were given a safety brief in the cabin, then some went up to the site with Robert to pitch the shelter tent while the others helped Christine unpack the trailer into the cabin to keep everything as dry as possible until it was needed. The sleeping tents were carried up to the site and unpacked in the shelter tent so that the scouts and cubs only got



the outer tent, pegs and poles to start pitching. Once the outer was pitched the inner was given to the patrol to hang it inside.

Pitching the tents was slow work and it meant supper was ready by the time they had finished getting their personal kit up to the site. The patrols were sent to get ready for bed while the leaders had a meeting with the patrol leaders, Tess, Suilven and Noah.

Archie had his tent up and dressed by 05:30, they had confused the time and thought it was 07:30, Robert sent them back to bed. There was so much noise by 06:30 that the leaders just got up and told the cubs and scouts to get up and light their fires for breakfast. As most of the group had not camped before it was 09:00 before any of the patrols had their breakfast cooked. Once breakfast was



over and the dishes washed there was inspection. Suilven and his APL Archie had remembered some of the things they had been taught on previous camps and had the kit in their tents neat and tidy and all of the patrol were in uniform. Consequently they won inspection. At flag break the patrol leaders announced the names the patrol had chosen for the camp, Tess lead the “Pegapies”, Suilven the “cockerels” and Noah the “eagles”.

After a game of dumb waiter the patrols refreshed their knowledge on rucksack packing, stove and light safety, camp first aid and how to use an axe safely making a tent peg in the process. We all then headed down to the cabin for lunch.

The cubs and scouts collected their newly packed day sacks and climbed into the “battle bus” as somebody called it and we drove round Loch Venacher to Ben A’an. The participants were divided into two groups and set off up the track with a good 5 minutes between the end of the first group and the start of the



second group. The first group kept complaining that it was miles to the top and chattered noisily as they ascended the track. Jack announced that he felt sorry for the people coming the other way who had to listen to the scouts and cubs chatter. The rucksacks got passed round the group to carry except for Jake who insisted on carrying his all the way to the top. At the

summit the two groups met up for their snack – a packet of crisps and a chunky kit kat each.

Descending the hill group one started singing. The Proclaimer’s song “I would walk 500 miles” became “I would eat 500 snacks”. Tess, Sarah and Katie would suggest a song and Jack and Archie would change the words to include “snacks” or “kit kats”. This continued on the battlebus back to camp with group 2 who were introduced to the new songs.

Back at camp the patrols needed to gather firewood to light the fires and cook tea- chicken tikka masala, rice and hot nan breads. Noah managed to light his fire without help. Suilven’s patrol chatted together all the way through cooking and eating.

The patrols played a game of rounders before campfire in the campfire circle. The fire itself was in a metal container and not conducive to toasting marshmallows much to everyone’s disappointment. Tess, Sarah and Katie lead the singing of the traditional campfire songs and Jack and Archie lead the performance of the new songs. Matthew and Charlie were invested and



Suilven, Archie and Noah renewed their promise as members of the scout troop.

Everyone was tired and asleep by the time it started raining. It rained all night and it was a bit damp when the cubs and scouts emerged from their tents at 07:30. Scott had covered his patrol's wood with a tarpaulin before going to bed and Noah had put their kindling in the wooden hut at the back of their site. Both patrol's managed to get the fires lit quickly, remembering to keep the fire fed while cooking on it was a different issue.

The Pegapies had their act together on Sunday morning and won inspection. The cubs and scouts then played Switzerland. Sarah tried running across a bog in her trainers and Robert rescued her shoe for her. By the end of the game Sarah was standing on the grass with her dripping trainers in her hand smiling happily.

After lunch at the cabin the gear had to be carried back down to the trailer and the tents folded away to be packed into the trailer. After the final inspection the winning patrol was announced – the Pegapies by 6 points.

Friends of Wallace Park

Many thanks to everyone who came to our stand at the Glenfarg Gala and gave feedback on the development plans. We had a tremendous response with lots of good ideas and comments.

The most popular ideas continue to be:

- Outdoor gym trail
- Picnic area and more benches
- Zip wire
- Extending the footpath around the perimeter of the park
- Small skateboarding area
- Amphitheatre

In addition to the Gala feedback, all our Primary school pupils were recently asked what they would like to do in the park. Their ideas were wonderful with climbing, jumping and ball games being the most popular activities. The pupils also wanted to see some environmental projects with the favourite being a hedgehog house.



The next step is to share all this with the Council's Landscape Architect later in the year who will then advise on what is possible, positioning and practical considerations and then draw up professional plans. We will then be able to get these ideas costed and start to discuss the next steps with the Council.

In addition to these ideas we would also want to include the wetland planting area in the north west corner where drainage issues prevent any other developments and a more permanent and substantial notice/information board to replace the temporary one.



We are planning a fun **Volunteer Day** in the park on Saturday 11th August from 10.00am to 1.00pm. We hope to be tidying up the sun clock, cleaning signage, building a bug hotel/hedgehog house, weeding and lots of other activities.

It will be a fun morning, refreshments will be available (and sunshine guaranteed!). All ages are welcome, enthusiasm is the only requirement so please come along and support you favourite park. Watch the noticeboard in the park for more details.

Again thanks to everyone for being a 'Friend of Wallace Park' .



Glenfarg Village Store

There's more than one way to
support your local shop.

SUMMER FAMILY BBQ

Sat. 25th August

Everyone Welcome.

Ladies' Cocktail Night


Sat. 22nd September

Free "Slippery Nipple" on Arrival.

Tickets on Sale Now.

Mon. to Fri. 7am to 7pm, Sat. & Sun. 9am to 7pm

Tel: (01577) 830 201



*Alas sweet love
I dare not speak
Your name
Lest it should hurt
Those others dear to us:
But when death's darkness
Falls upon my eyes
Your name unsung,
Shall be upon my lips*

Isobel Nicolson

Wilderness Country

Perched in the furthest North West corner of Scotland, the landscape of Sutherland is unlike any other part of this country. Huge grey mountains rise out of bog land covered with lochs of all sizes. Very little of this area has recognized paths making it one of the great wildernesses of Scotland.

You can travel to Sutherland via the delightful ferry port of Ullapool at the head of Loch Broom, where it meets the ocean and this is where the journey really begins. Heading north from Ullapool on the A835, after a 20 minute drive you come to Knockan Crag nature reserve where there are 3 trails you can follow to discover the history and formation of the oldest rocks in the UK. The rocks at and around Knockan Crag record the last 3,000 million years of history for the landmass that we now know as Scotland and discoveries there revolutionised the way geological scholars understood the process by which land masses were formed.

Just before Knockan you have the option to take the un-named road on your left



signposted to Achiltibuie. This is a wonderful drive past the magnificent Stack Pollaidh. At 632 metres it is a decent climb but the path in and up has been upgraded over the years to make it an easier walk.

Carrying on past Stac Pollaidh you arrive at Achiltibuie and Coigach where there are wonderful beaches and a true feeling of being away from it all. From here you can return to the main A835 to head north but if you have time it's well worth taking the single track road from there to Inverkirkaig and Lochinver. On a good day it's one of the most scenic drives you will ever do.

Going north on the A835 you come to the Ledmore junction where you turn left on to the A837 and the road winds through moorland covered with sparkling lochs and magnificent grey rocky mountains rise from almost sea-level. There are many viewing stops on the way and a few places you can get a coffee.

Eventually you will reach a junction giving you the option to turn off to Scourie and continue on up to the very topmost corner of Sutherland. Alternatively you can carry on to Lochinver, a small fishing town with many facilities including a world famous 'Pie shop'.

We generally head up to Scourie but often stop en-route at Kylesku where the hotel, which sits on the edge of the sea loch, has been upgraded in recent years and where you can enjoy a coffee whilst looking out through the picture window to watch seals watching you!

Scourie itself has a caravan park with what must be one of the finest sea views of any in the UK. We normally rent a cottage with friends and if you like the outdoors there are many attractions and things to do including walking, sea-kayaking, fishing, bird watching and of course the wonderful beaches.

The weather this year made a day at the beach essential for us when we visited at the end of June and we went to the beautiful crescent shaped beach at Oldshoremore north of Scourie. White sands, clear green sea-water and about 15 other people sharing this large beach made this a day to remember.

The trout fishing in Scourie is as good as you will get anywhere and if you are prepared to walk a bit you can find many lochs that are not over fished. The trout are magnificent and there is little better than a trout caught and cooked on the same day.



We have been travelling to this part of the world regularly for the last 20 odd years for walking and fishing and the improvements since community buy-outs started are remarkable. There are so many more places to eat, drink and stay and many obvious signs of a community that is thriving.

The area is changing in other ways as the well-publicised travel route 'The North Coast 500' has brought in many visitors. However, that said, if you want to find a part of Scotland where you can feel away from it all then if you don't find it in Sutherland you never will!

Glenfarg and Duncreevie in Bloom

Well we can't say we have not had a good summer! Amazing!

Our planters are looking nice which is due to those people who have been on watering duty during the extremely hot weather! Hard work for the people and for the plants! Thank you also to the volunteers who are cutting the grass on south and north entrances to Glenfarg!

Have you noticed that we have 2 different types of baskets this year? There are 4 at the basket planter on the right as you enter Glenfarg from the north. These were done by GDIB and are our trial for saving money by producing our own baskets. They even have water reservoirs and in theory that means less watering! Next year, we plan to do all our own baskets! The other baskets on the left as you enter from the north were purchased from PKC – they do look lovely. Now that the Hawthorn has been removed from that basket area, perhaps we need to consider moving the posts to make the spread more even! As always, new jobs just seem to pop up!

As always, GDIB has something to be worked on and there are 2 events coming up:

PKC competition

We have just heard that our judging will take place on Thursday 2nd August. We have not entered the competition for 2 years but since PKC give us a grant to help towards our costs, we feel we need to enter it this year again to show our support. It does mean a bit of work but if everyone rallies round, the task is easier and it is your community. Jobs you can do to help are:

Cut overhanging bits on your trees and shrubs which restrict people walking along pavements. Sweep the entrance to your driveway (especially if it is gravel). Pick up any litter you see as you go round the village. Tidy your own garden. It is not all about how well our plants look; it is also about the environment we live in! This summer, the school has some colourful planters at the front and GDIB have been helping to water and weed them along with watering the vegetable boxes. The sweet corn is developing nicely!



Open gardens

This will be held on Sunday 19th August from 1.30 – 4.30. There will be 8 or 10 gardens open and the usual cream teas will be on offer with the price of entry. More details will be available through the Grapevine and in the shop once our committee members return from holiday!

Help is needed in manning the Hall for cream teas since the majority of our committee are involved with opening their gardens or running the plant stall. Can you spare half an hour or an hour? Please get in touch with Irene Findlay (830441 or Irene@findlayclan.com)

GDIB runs Open Gardens every 2 years and this is one of our major fund raisers so your support would be appreciated! Please spread the word for us!



GLENFARG GALA 2018

The annual Glenfarg Gala was held this year in fantastic summer weather, meaning many villagers and guests turned out in their droves.

We had a big Bouncy Castle, Pig Racing, Train Game, Splat the Rat, Putting challenge, Hook the Duck, Nail It Straw Bale, Bottle Stall, Raffle, Pedigree Goats, Perth Brass Band, BBQ, Bar, Teas Cakes and Coffee, Candy Floss and several Craft Stalls.

Everybody had a great time especially with such a vast and varied amount of entertainment on offer for all ages.

Lots of prizes were won, with the star raffle prize - a private boat tour on Loch Lomond with their own personal chef, won by Alison Harrison.

The Gala Committee would like to thank everyone for coming along on the day, and a special big thank you goes to all the volunteers and stall holders without whose help the Gala couldn't happen.

This years surplus is £2181.31 which will be made available to be shared amongst Village Clubs and Associations.

If your Club or association would like to apply for some of the surplus, please apply to the Gala Treasurer John Taylor by August 31st stating how much you wish to be considered for and for what reason it is required.

His Email address is john.g.taylor34@outlook.com

We look forward to hearing from you.

The Gala Committee









Earnside

***U.K. & Continental
Travel***

Tel: 01577 830360

E mail: info@earnside.com

Website: www.earnside.com

Success at the Kilgraston School's Scottish Equestrian Championships

Arngask Primary, a rural school of 84 pupils, competed at the above championships held at Highfield at Howe, Giffordtown on Saturday 28th April.

All the children, and parents, gave up their free time to practice their dressage and showjumping, meeting up at different locations to ride together. We entered as we had enough children interested to take part and we went to have fun and for the experience as we knew we would be competing against many children at secondary school.





Gregor Bell (Flora of Inverdarroch), Beth Robertson (Struie Polly), Anna Baynes (Lily) and Anna Marshall (Rainford Seryddwr) competed in the Class 1: Walk/Trot Dressage.

Anna Marshall (P3) was 1st individual with 24 penalties, with Anna Baynes (P7) 2nd with 26 penalties. The team went on to be awarded 1st place with 81.4 penalties.

In Class 5: 55cm Show Jumping; Lucy Allison (Bylffa Caramel and Danwood Delila), Maisie Price (Polo), Sophie Normile (Lenny), Anna Baynes and Anna Fairweather (Flora of Inverdarroch) won 1st place team, the only team with 0 faults.

Sophie Normile (P7) was 2nd individual with Lucy Alison (P7) 3rd and 5th place.

Lucy Allison, Maisie Price, Sophie Normile and Anna Fairweather also competed in Class 2: Introductory Dressage 2007. Sophie, with the 'I don't do dressage pony!' was 1st with 24.6 penalties with Lucy 2nd with 27.5 penalties. Arngask did it again! The team was awarded First Place Team with 82.5 penalties.

To top it off, Sophie came 6th in Class 6: 70- 75 cm Show Jumping.

What a huge achievement for Arngask! The team spirit and support between team members was a pleasure to be a part of and we are extremely proud of your achievements.

Restoration Comedy



Here are Brian Harrison and Alex Johnston, two stalwarts of the Auld GITs (Glenfarg Improvement Teamsters), sanding down the summer-seat in preparation for painting, before returning it to its home by the War Memorial.

John Armstrong and Brian brought it round, about 10.30am and Alex and Brian completed the sanding, less than an hour and a half later.

Should any other handy chappies like to give of their skills, they will be most welcome. The GITs usually meet over coffee between 10am and 12 noon on Thursdays at the Village Hall Coffee Lounge to chat about any wee jobs that might need to be done, to improve life in this wonderful village. If you would like to help, but are not free on Thursday mornings, just contact Brian, John or Alex, who are all well known in the village.

Alison Harrison



HENDERSON

PLUMBING AND HEATING

Henderson Plumbing and Heating, based in Glenfarg, provide a professional and reliable service.

- *Full Bathroom Renovations
- *Central Heating systems
 - *Biomass systems
 - *Drainage
- *General maintenance
- *Traditional Cast iron rain water gutters
- *lead work

Mobile. 07703 735925

hendersonplumbingandheating@outlook.com



Glenfarg Folk Club



**SHONA
DONALDSON AND
PAUL ANDERSON**
Monday 6th Aug
**Members £6, Non-
Members £9**



A huge welcome back for Paul and Shona, the brilliant husband and wife duo from the North East. Paul is an acknowledged maestro and award winner in his field i.e. the fiddle, and Shona is an award winning song/ballad singer, having won the Scots Singer of the Year in 2009. They combine to produce an experience of Scottish traditional music of the very highest quality.

CURMUDGEON/GRASS ROOTS
Monday 13th Aug
Members £6, Non-Members £9

Two very different groups/bands on stage tonight. We are delighted to introduce Curmudgeon, a Leith-based multiinstrument trio, Donald Gorman, Laurie Brett and Andrew Macintyre, who perform both traditional and contemporary songs and great sets of Scottish music. They share tonight's bill with Grass Roots, a group of very experienced bluegrass musicians who will certainly get our toes tapping! A great double bill on offer.

SINGAROUND
Monday 20th Aug
All £2

Let's finish our summer with one of our favourite Club nights during which "Chorus Songs" are featured. All welcome.

BOB WOOD
Monday 27th Aug
Members £6, Non-Members £9

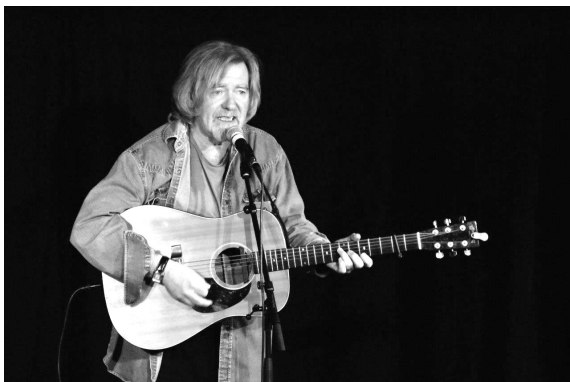
A huge welcome back for one of the Club's favourite artistes, "Gentleman Bob"! A wonderful singer/songwriter and guitarist, Bob never fails to entertain in his own gentle way; lovely style and lovely guy.

JED GRIMES

Monday 3rd Sep

**Members £6, Non-members
£9**

Having begun his career with the 70s folk-rock band Hedgehog Pie, Jed has continued to entertain throughout Europe ever since. A combination of his folk-roots music, powerful vocals and rich guitar style, allied to his ready Geordie wit, continues to excite his audiences.



FLOSSIE MALAVIALLE

Monday 10th Sep

Members £6, Non-members £9

French born but having been based in the NE of England for the past 16 years, Flossie has a very wide repertoire ranging from folk through jazz through Piaf through blues; and that range, combined with a brilliant personality and enthusiastic stage presence, ensures a night to remember.

SINGAROUND

Monday 17th Sep

All £2

Summers over, Seasonal Affective Disorder (SAD) on the way. The theme tonight has to be "Quality Dreich" to allow us to wallow in our low mood. Despite that, all welcome whether to sing, play, listen or cry. BYOH (Bring Your Own Hankies!)



BROOKS WILLIAMS

Monday 24th Sep

Members £6, non-members £9

Hailing originally from Statesboro, Georgia, we welcome one of the modern-day great American blues and acoustic guitarists. Brooks's music has been described as drawing heavily on his native roots, "Blues-icana", and his style has been described as "a beautiful fusion of blues, old country with a touch of Americana". A multi-recording artiste who has performed at Celtic Connections, The Cambridge Folk Festival and with thousands of gigs under his belt, tonight he is at The Backstage. Wow!

Scouts and Cubs at Willowgate Centre



The older cubs joined the scouts for a kayaking session at Willowgate. They all managed to carry the kayaks to the water's edge and work out how to get onto the kayaks without capsizing. Once on the water they practised paddling forwards then backwards before finding out who could turn the kayak in the tightest circle.

The scouts and cubs were asked to capsize the kayaks, right the kayaks and then get back onto the kayaks without leaving the water. Tess was able to right her kayak on her own and get back onto it, Sarah and Katie work as a team could right their kayaks, the boys being smaller couldn't so Tess jumped back into the water to help them.

Back on the kayaks they were asked to try paddling while standing on





the kayak, Sam excelled at this. After capsizing again Sulven tried standing on his upturned kayak and paddling it.



LEIGH SMITH CAKES



Bespoke Cakes with a 'Wow' Factor



View cakes and cupcake bouquets at
www.leighsmithcakes.co.uk and on
Facebook 'Leigh Smith Cakes'

To avoid disappointment, please allow at least one month's notice for celebration cakes, although I will always try to accommodate requests where possible.

The Spinney, Duncrievie Road, Glenfarg

Tel: 01577 830256 Email: info@leighsmithcakes.co.uk

07814 239142

HOW THE GLENFARG VILLAGE FETE CHANGED MY LIFE



Before you correct me and tell me that it's called the 'Gala', I'm not talking about the event that we enjoy these days at the Village Hall but the one that took place for many years in Wallace Park.

How on earth can someone have the course of their life changed by an afternoon out at the fete?

Some of you will remember that there was usually a second-hand book stall in one of the marquees where you would find a huge variety of books of all sizes and for all ages. Ten years ago I was browsing through the books, one of my favourite pastimes. I wasn't looking for anything in particular. Some titles and

book covers have more of an appeal than others and you can't resist peaking inside.

One such book was all about cakes. For a change it wasn't so much about recipes, there were only a couple of pages of recipes at the beginning. This one was different. It was all about how to decorate cakes using fondant icing, which I'd never heard of. As I flicked through the amazing, colourful designs, one in particular caught my eye – it looked like a bouquet of roses. It was stunning and

as soon as I saw it I thought of my Mum. It was a few weeks away from her 70th birthday and she loves flowers so I thought it would be the perfect cake for her.

I was reassured to see that the book contained step-by-step instructions for each cake, with lots of photos to help you. Could I possibly make a cake like this with no previous decorating experience? There was no doubt in my mind that I would have a go, so I duly paid for the book, I can't remember how much but it was probably no more than a pound.

What fired me up even more was showing the cake bouquet picture that afternoon to a friend, telling her "That's what I'm making for my Mum's 70th birthday cake." "Really? You're actually going to make that cake?" was the response. 'Of course I am, there are instructions, it can't be that hard!'



Fast forward a few weeks to the Sunday of the birthday party. We were due to leave the house within the next half hour to travel to my brother's in Dunblane.

I was still in my dressing-gown, struggling to finish the cake and realising that I'd seriously under-estimated the time it would take to pull off the task I'd set myself. I learned so much about cake decorating materials and equipment just making that one cake.

We did make it to the party and I did complete the bouquet cake, complete with cellophane wrapping and satin bow. Mum was completely amazed at the cake, as were the rest of my family, what a great reaction after all the work I'd put in!

That one cake was the inspiration to set me off on a new hobby, creating cakes for friends and family whenever there was something to celebrate. I still had my 'proper' job in financial services but found the time to squeeze in the baking and decorating of more and more advanced cakes. My library of cake decorating books and my specialist tool collection grew and grew and I started going to classes.

Wedding cakes became part of my repertoire. There can't be any more stressful kind of cake to make but they bring such huge pleasure to customers and satisfaction to the cake maker.

Eventually I took early retirement from my old job, took the plunge and started my home-based cake business, and now my life has changed completely. I no longer sit in an office staring out of the window wishing I was at home in the kitchen working on cakes. I now stare out of the kitchen window at the lovely view thinking how incredibly lucky I am to have found a pastime that I thoroughly enjoy. Judging by the comments my customers send me, they also appreciate the cakes and I love every 'Wow!' that I hear when someone sees their cake for the first time.

I only realised recently that it was ten years ago that I'd bought that book at the fete – it's Mum's 80th birthday in a few weeks' time. Her cake will be flower-themed again and I'm looking forward to trying out a new design this time featuring edible flowers and mini meringues.

Is there anyone else whose life has been affected by a day out somewhere or by an item they purchased that was out of the blue? Why not write to the newsletter and tell us your story?

Building & Repairs

Woodmarch Kinnesswood

Phone: 0798 374 2524

buildingandrepairs@gmail.com

www.buildingandrepairs.co.uk

- Roof Repairs
- Flat Roofs
- Slating
- Rhones/Guttering
- Down Pipes
- Skews
- Chimneys
- Brickwork
- Plastering
- Cornices
- Cementwork
- Ceilings
- Fascias
- Stoves
- Fireplaces
- Stonework

All Work By Apprenticeship Served, Experienced and Insured Tradesmen.

Give your feet a Treat



Private podiatry/chiropractic in
the comfort of your own
home.

H.P.C. Registered

Lisa Allison BSc Tel 01577 830678

GLENFARG COMMUNITY COUNCIL

GLENFARG COMMUNITY COUNCIL

MINUTES OF MEETING

Monday 9th July 2018

Glenfarg Village Hall

PRESENT: CCllrs Ponton (Chair), Mcleish, Pilmer, Taylor, Watson,

Also present: Cllrs Robertson & Watters, and 4 members of the public

APOLOGIES: Cllr, Purves, CCllrs Hesar, Horsman, Loudon.

1. MINUTES OF THE LAST MEETING:

Minutes of the previous meeting were agreed and signed.
Proposed CCllr Taylor, seconded CCllr Pilmer

2. ACTION POINT UPDATES:

An update on action points from the previous meeting were reported as follows –

Phonebox: CCllr Horsman had provided a report. The disconnection has been delayed and BT are unable to provide a definitive date. CCllr Horsman will chase again on a monthly basis. It has been confirmed that BT will continue to be responsible for the electrical supply and its payment. If they need to disconnect this in the future they will make us aware so that we can organise something else. They state they are only responsible to the point of the fusebox, beyond this any faults are the responsibility of the CC.

Ongoing



We don't just sell you a stove
We offer you a lifestyle...

STOVES

All the main manufacturers of stoves are available and we can source almost any stove. To mention just a few Charnwood, Stovax, Hunter, Di Lusso, Firefox, Adura, Arrow. Pop in to the showroom and see the stoves up close.

SPARES

Replacement Glass, Firebricks, Rope seals and Spare Parts are all available and can be fitted by our trained engineers in your home. Flexible liners (15 yr guarantee) and chimney systems available for the self-installers.

INSTALLATION

Our Hetas trained engineers can fit the stove of your choice after carrying out a FREE site survey. You don't have to buy a stove from us. We can fit your own stove - subject to suitability. All building works carried out by our tradesmen.

FUEL SUPPLIES

We stock kiln-dried hardwood logs (<20% moisture) supplied in handy nets or in bulk from our specially designed tipper trailer. Kiln dried kindling and eco-logs (briquettes) made from hardwood supplied in 10kg bags. Delivery service available.

Showroom & Workshop 62 Muirs - Kinross KY13 8AU

Tel: 01577 330526 Mob: 07885 722125

W: www.stovestuff.scot

E: craig@stovestuff.scot



FOR A FREE
SURVEY CALL
US TODAY

Road and paths: CCllrs Horsman and Ponton had walked round the village with Gary McConnell (PKC), and Cllrs Robertson and Purves. Gary commented that although some drains and roads looked poor they were not at a point of being a priority. He stated that there was an ongoing schedule of work to be completed before new work could be added. The flooding problem at the Duncrervie Road / Ladeside junction is to be investigated as soon as possible. Other work would probably fall into the next schedule. A member of the public raised the problem of the soakaway on Duncrervie Road opposite the park. Cllr Robertson suggested that the CC write to Gary about this, and the mid-Ladeside drain. *CCllr Ponton*

Liability Insurance for Defib: CCllr Horsman had provided a report. He had not been able to find out information on this as yet but will try to contact Kinross who have installed several recently. The electricity cost is still being negotiated. **Ongoing**

3. MATTERS ARISING (not covered on the Agenda)

There were no other matters arising.

4. PLANNING REPORT

CCllr Pilmer reported as follows

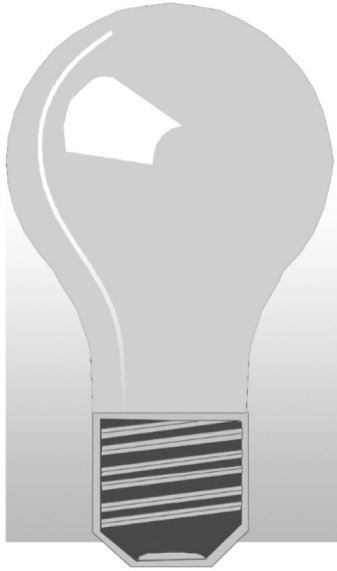
APPLICATIONS

Alterations and extension to dwellinghouse

Edenhead Main Street Glenfarg Perth PH2 9NY

Ref. No: 18/01160/FLL | Received: Tue 03 Jul 2018 | Validated: Tue 03 Jul 2018 | Status: Awaiting decision

Change of use of public road turning area to form private access, extension to dwellinghouse and erection of a garage
15 Elm Row Glenfarg Perth PH2 9PQ



John Allison

(electrician)

*'Ardblair', East Blair,
Glenfarg, Perth PH2 9QL*

Tel: 01577 830 678

Mobile: 07717 791 484

Email: johnwallison@btinternet.com

All types of electrical work undertaken

Also:

Oil and gas central heating faults ~ Telephones
Computer network cabling ~ TV aerials and
distribution ~ Satellite re-alignment, alterations and
distribution ~ Wall mounted TVs installed

FREE ESTIMATES/ADVICE

Ref. No: 18/01043/FLL | Received: Thu 14 Jun 2018 | Validated: Thu 14 Jun 2018 | Status: Awaiting decision

Erection of a dwellinghouse

Land 70 Metres North West Of Katiesdyke Newfargie Glenfarg

Ref. No: 18/00900/FLL | Received: Thu 24 May 2018 | Validated: Fri 01 Jun 2018 | Status: Awaiting decision

Erection of four wind turbines and ancillary infrastructure

Binn Eco Park Wind Farm Glenfarg

Ref. No: 18/00865/FLL | Received: Mon 21 May 2018 | Validated: Tue 29 May 2018 | Status: Awaiting decision

Change of use and alterations to steading to form extension to dwellinghouse

Easter Deuglie Glenfarg Perth PH2 9QJ

Ref. No: 18/00842/FLL | Received: Thu 17 May 2018 | Validated: Thu 07 Jun 2018 | Status: Awaiting decision

Erection of 2no. dwellinghouses and a garage

Land 40 Metres South East Of Solbacken Church Brae Glenfarg

Ref. No: 18/00845/FLL | Received: Thu 17 May 2018 | Validated: Wed 23 May 2018 | Status: Awaiting decision

Erection of plastics processing facility and associated works

Waste Recycling Centre Binn Farm Glenfarg Perth PH2 9PX

Ref. No: 18/00689/FLL | Received: Thu 26 Apr 2018 | Validated: Thu 10 May 2018 | Status: Awaiting decision

DECISIONS

Installation of underground cable and siting of transformer enclosure

Earnside Energy Ltd Binn Farm Glenfarg Perth PH2 9PX

Ref. No: 18/00850/FLL | Received: Fri 18 May 2018 | Validated: Thu 24 May 2018 | Status: Approved

Repainting of dwellinghouse

ALPHAVET VETERINARY CENTRE

39 High Street, Kinross, KY13 8AA

For a caring professional service for all domestic pets



TELEPHONE 01577 863 328

E-MAIL: alphavet@alphavet.co.uk

WEBSITE: www.alphavet.co.uk

Scotland's 1st Veterinary Practice Website!

Consultations by appointment

Monday to Friday 9.00am to 12.00 noon
and 4.00pm to 6.00pm

Saturday 9.00am to 12.00 noon

Reception is open: Monday to Friday 8.30am to 6.30pm
and Saturday 9.00am to 12.00 noon



***For our 24-hour Emergency Service
please telephone 01577 863 328***



**KEEP
CALM
I'LL DO
THE
IRONING**

Sophie Dingle

07786 245 800
Glenfarg, Perthshire

24 - 48hr Turn around
Free collection and delivery
minimum order £8

THE BEAUTY BARN

Beauty Salon situated upstairs at Jamesfield Farm Shop. Offering a range of treatments at affordable prices, great views of the Tay Estuary, café restaurant and free parking available.

Please call or message to book an appointment.

07939876428

BY APPOINTMENT ONLY

www.thebeauty-barn.com
www.facebook.com/thebeautybarnscotland
Jamesfield Farm Shop, Nr Abernethy,
Fife, KY14 6EW

The Old Library Greenbank Road Glenfarg Perth PH2 9NW
Ref. No: 18/00810/LBC | Received: Mon 14 May 2018 | Validated:
Mon 28 May 2018 | Status: Approved

There was some discussion on application 4, wind turbines. It was noted that PKC had received a number of objections, mainly to the turbines' height, which had been increased slightly. Cllr Taylor asked for an update on the CCs negotiations with Greencat. CCllr Ponton reported that a Management Company was still working on behalf of the 4 CCs involved.

There were also some questions about application 2, Elm Row. CCllr Ponton explained that the original application had been withdrawn and the new application had placed the garage further back from the street, which would give better line of sight along the road for people emerging from the park. A member of the public commented that the fence on the opposite side of the path also blocked the view.

5. POLICE REPORT

No police were in attendance and a report had not been received. CCllr Pilmer puts issues of public interest from the Commander's Bulletin onto the village Grapevine. Cllr Robertson commented that the police were asking the public to be watchful where youngsters are playing near / in water during the hot weather. To be circulated via the Grapevine.

CCllr Watson

6. TREASURER'S REPORT:

CCllr Horsman had supplied a Treasurer's Report as follows.

1. GCC – BALANCE ON ACCOUNT £596.09

Income – P&KC Grant £312

Expenditures – Hall Rental £24, Cllr Expenses £54.98 and

YOUR LOCAL PLUMBER

**NO CALL OUT CHARGE - NO JOB TOO SMALL
DISCOUNT FOR SENIOR CITIZENS**

- Boilers - New Installations, Repairs and Servicing (OIL, NG & LPG) & Landlords Safety Certificates
- Bathrooms - New Installations, Upgrades & Shower Repairs
- Central Heating - Radiator valves repaired & replaced, system descale & flush, new radiator installations, Under floor heating, Fitting of gas hobs & cookers
- Dripping Taps - Outside Taps - Plumbing in washing machines & dishwashers - Toilet Repairs - Drains etc



**DOUGLAS MILLER
01577 861623**



Stewart Funeral Directors

14 High Street, KINROSS KY13 8AN
Tel. (01577) 864607



**Modern Hygienic Preparation Room
Private Family Viewing Suite
24 Hour Personal Service
Specialist Ambulance Transfers
Funeral Planning Consultations
Memorial Sales by Regency Memorials**

24 Hour Emergency Service Tel. (01577) 864607

Examiner of Accounts Gift £25

2. GCC NEWSLETTER ACCOUNT – BALANCE £ 11,514.40

This balance is made up as follows :

	Newsletter	Microgrant	Nursing Fund
		£	£
At 7 th May 2018	7,472.54	310.32	4,011.00
Income	128.20	Nil	Nil
Expenditures/payments	148.00	259.66	Nil
	<u>7,452.74</u>	<u>50.66</u>	<u>4,011.00</u>

Income/Expenditures since last meeting:

Newsletter:

Income – Newsletter shop tin and Advertisers £128.20

Expenditures – Newsletter Printing £148

Microgrant:

Income – Nil

Expenditures – Glenfarg Community Company £168, FoWP £91.66

3. SCHOOL FUND £241

Expenditure - £100 to School for end of year prizes.

TOTAL FUNDS HELD £12,351.49 at 9th July 2018

7. AOCB:



**AVAILABLE 7 DAYS A WEEK
LOCAL RELIABLE PROFESSIONAL
SPEEDY SERVICE FOR EMERGENCIES**

All pests professionally dealt with

Free Surveys Fully Insured

Domestic Commercial Agricultural

Contract work or One-off visits

rats • mice • moles • rabbits • squirrels
flies • fleas • bedbugs • wasps • bees • ants
moths • spiders • insect infestations • rabbit fencing
bird proofing • pest birds • all other problem pests

Call us for all your pest problems.
We also install all types of bird-proofing.

01738 813751

07767 353535

www.andylawpestcontrol.co.uk



Bridge of Eam, Perth.

a) Nursing Fund: CCllr Ponton had received some queries from a member of the public about this fund, which she had answered. She stated that the CC had been unaware that it could have made a claim at the time of the sale of the nurse's house. The period for the claim having lapsed, this possibility had now been lost.

b) Open ditch: CCllr Ponton reported that residents who live near the south-running open ditch alongside the new development are to have a meeting with Stephens Builders about this. No involvement of the CC is required.

c) Fly tipping on the Wicks O' Baiglie Road: A member of the public reported that this had occurred on land near the flyover of the motorway. Cllr Robertson informed us that fly tipping beside a road would be dealt with by PKC, but on private land it is the responsibility of the landowner. The owner of this land is not known. It is believed that the site is in the Glenfarg CC area but it was decided to consult with Bridge of Earn CC.

CCllr Ponton

d) Sewage from the Stephens Development: Friends of Wallace Park had met with the Stephens site manager and learnt that sewage from the new development is to be pumped uphill to join the main sewage in Duncricvie Road. A member of the public queried the capacity. Cllr Robertson responded that developers are required to pay to provide increased capacity, and this work has been carried out.

e) Path in Wallace Park: The line of the new sewage pipe is also the line of construction of a new path from the development to meet the existing path. Friends of Wallace Park had queried its width (3m) and learnt that this is a requirement of PKC Planning Department, to allow walkers with pushchairs etc to pass each other. A second path from the development will allow access to emergency vehicles. A member of the public queried the need for this and the likelihood of other vehicles entering the park.

J. Stewart & Son

Landscaping and Paving



Landscaping and Ground Works



Ask about turfing

ALL WORK IS CARRIED OUT BY TRAINED CRAFTSMEN
AND IS FULLY GUARANTEED

Call for a **FREE** no obligation estimate

Tel: 01738 245465
Mob: 07516 595192

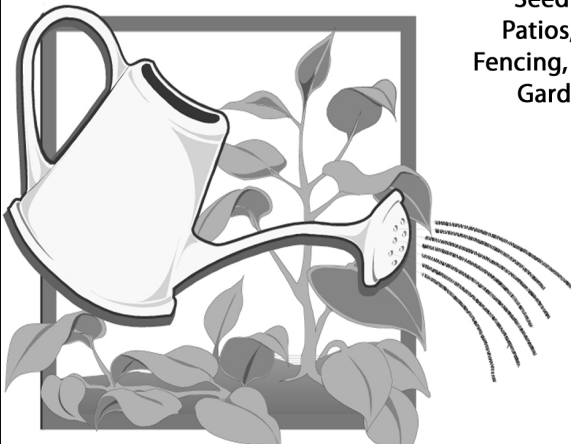
Quality just can't get any better!

LANDSCAPING & DRIVEWAYS
Monoblock • Stone Paving
Slabbing • Decking
Sandstone Walls • Re-rendered
Drainage • Gravel • Cobbles
Heritage • Cotswold Drives
Patios & Paths • Parking Areas
Land Engineering
Tidying and Full Garden Service
Tree Surgery

Brian Todd Landscapes

1 Ash Grove, Glenfarg

Contact: 01577 830 728
or 07718 916 318



Seeding, Wall Pointing, Repairs,
Patios, Driveways, Hedge Cutting,
Fencing, Gutters cleaned and repaired,
Garden Maintenance, Slabbing
& all other odd jobs

FREE
ESTIMATES
COMPETITIVE
RATES

The solution may be removable bollards.

f) Road Closure: The secretary had been informed of a road closure Ash Grove to Duncrievie Road on 13th August for 1 week, for necessary work. Access only.

g) Marquee: The marquee, presently stored in the old changing rooms, will need to be removed before demolition. May be stored at Shuttlefauld. *CCllr Pilmer*

h) Gala Day: CCllr Taylor reported that there had been a good turnout for this event and there was a surplus of funds in excess of £2000 for distribution.

i) Proposed VAS at Duncrievie: This is planned for the north end of Duncrievie just before the 30mph sign. Map showing the location of the speed sign to be made available on the village website & noticeboard. Comments required before 27th July.

CCllr Watson & CCllr Pilmer

j) Public Toilet & Skateboard Park in Wallace Park: Members of the public objected to the site as shown on the Friends of Wallace Park map which had been put out for consultation. There was some discussion on possible problems. Cllr Robertson informed us that Kinross young people had been involved in planning their skateboard park and it has been very successful. CCllr Ponton responded that FOWP had devised the plan from suggestions put forward by residents, and were now looking for feedback at their next meeting (17th July). Nothing had been decided.

k) Tayside Valuation Board: CCllr Pilmer had received correspondence about the site of the GDIB shed. The land belongs to PKC, and it was therefore felt that no rates were due. CCllr Pilmer to reply. *CCllr Pilmer*

l) Scottish Funds: There are funds available from the Scottish Initiative to hold discussions on local democracy. Cllr Watters also spoke about PB events - Participatory Budgeting – which is



TYREFAIR LIMITED

Unit 11
Bridgend Industrial Estate
Kinross

There is now a specialist tyre and battery dealer in Kinross that opens every day of the week, and has tyres and batteries at prices to suit your budget. **TYREFAIR** is a family business, with staff that have many years of professional experience in the tyre trade, and you can find them at **Unit 11, Bridgend Industrial Estate, or telephone on KINROSS 865656**. **TYREFAIR** welcomes trade account and offers the following goods and services:

- New tyres for cars and vans
- Guaranteed re-treaded tyres
- 4x4 tyres for business and leisure
- High performance tyre specialists
- Wheel alignment
- Top brand quality batteries
- Puncture and Vulcanised repairs
- Number plates made while-you-wait

TYREFAIR has a comfortable lounge, where you can relax while the work is carried out and you can rest assured that we will treat your vehicle with the care and respect that you demand.

WHY NOT CALL IN, OR TELEPHONE NOW FOR MORE INFORMATION?

KINROSS (01577) 865 656

Your Help Would be Appreciated

Your Community Councillors liaise closely with Perth & Kinross Council to ensure our community is kept in good repair and safe for all.

However, they cannot be everywhere so your help is requested: if you find a pothole, a street light that isn't working, a damaged road sign or a grit bin that is empty or similar – please report it. Do not assume someone else has done it.

You can contact PKC direct on 01738 475000 or log into the PKC website at www.pkc.gov.uk and follow the "Report It" link.

Thank you.



Woodlands Bed and Breakfast

Church Brae, Glenfarg

www.woodlands-bandb.co.uk

Off Church Brae at end of lane below church

Ample car parking.

Two double bedrooms with king size beds

Resident's lounge

To book phone Cedric or Heather Wilkins

01577 830300

a way for people to have a direct say in how local money is spent. Local organisations looking for funding make presentations and there is then a community vote. It is believed that Kinross CC may be making an application on behalf of all Kinross-shire CCs. To be investigated. *Cllr Pilmer*

m) Verge Cutting: Cllr Watson expressed concerns that, despite calls to PKC from numerous residents about the danger of tall grass at the Glenfarg / St Andrews Road junction, it had taken over two weeks for this to be cut. Cllr Robertson suggested that we ask for this junction to be given higher priority as there is a particular danger from traffic exiting the motorway at high speed.

Cllr Watson

n) Extension to Green Routes: Cllr Loudon had requested that consideration be given to a Green Route on the road from Hayfield up past the Deuglies. Cllr Robertson reported that he had been talking to the Council about getting the Arngask and Dron cycle network extended to include the road from Glenfarg to Forgandenny. This would result in the speed reduction that had been requested by residents. He hoped it would be agreed in November.

o) Kinross-shire Forum: 13th August 7pm at the Campus. We are to send two representatives. *Cllrs Pilmer and Taylor*

**The next meeting of the Community Council
will be held on 3rd September, 7.30 in the Village Hall**

THINK-A-HEAD Hairdresser

Hairdressing done in the comfort
of your own home by an
experienced stylist

**Cut & Blow Dry
Tint, Foil Highlights
Perms**

**Special Rates for
OAPs and children**

Call Elaine on 01577 840043



For all aspects of
PIANO TUNING
and repair
David R. Watt
(01577 830 345)

Genuine Hardwood logs by
the trailer-load or part load.
Logs cut, split and delivered
to suit individual needs.

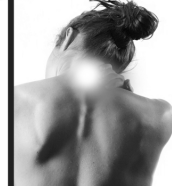
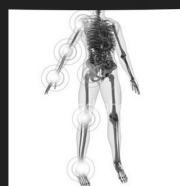


For further
details ring
Ewan
Cheape
Glenfarg
830 349

KINROSS Physiotherapy



- **SPRAINS/STRAINS/TEARS**
- **LOWBACK/NECK PAIN**
- **HIP/KNEE/ARM PAIN**
- **GOLFER/TENNIS ELBOW**
- **TENDON INJURIES**
- **ARTHRITIS**
- **TMJ (JAW PAIN)**
- **POST FRACTURE OR DISLOCATION**
- **REHABILITATION FOLLOWING SURGERY**



OPENING TIMES

**MON - FRI
10am - 9pm**

**37 New Road, Milnathort
Kinross KY13 9XT**

**01577 864875
07912 100 845**

enquiries@kinrossphysiotherapy.co.uk



ELSTON (Est. 1983) LANDSCAPES

Landscaping & Stump Grinding

TREE STUMP REMOVAL SPECIALISTS

Tree and shrub planting

Seeding & Turfing

Paths, Patios & Driveways

Hedge Cutting, Pruning and Tree Surgery

Fencing, Trellis & Pergolas

Garden Drainage

Operated Mini Digger, Dumper & Turf Lifter For Hire

01738 850 742

keith@elston-landscapes.co.uk

www.elston-landscapes.co.uk

Fully Qualified & Insured



AUSTIN HEATING & ELECTRICAL

Boiler Servicing and Repairs - OIL, GAS, LPG & ELECTRIC

Aga / Rayburn Servicing & Repairs (Rayburn Guild Engineer)



Registered
Business



Call - 07786 705261 or 01577 861188
No Call-Out Charge

www.austinheat.co.uk



VETERINARY SURGEONS

CAMERON & GREIG MRCVS

'Ardmhor', Stirling Road, Milnathort KY13 9XR



By appointment only

Monday - Friday

9 - 10.00am

2 - 3.00pm

6 - 7.00pm

Saturday

9 - 10.00am



Telephone: Kinross 863 494
Website: www.cameronandgreigvets.co.uk

Large and small animals
24-hr emergency service

General Information

Doctors' Surgeries

Loch Leven Health Centre, Muirs, Kinross - **01577 862 112**

Daytime emergency number - **01577 865 252** - NHS 24 Out of Hours - **111**

The Surgery, Main Street, Bridge of Earn - **01738 812 000**

Library



The van visits the village and stops at Main Street on every other Tuesday from 12 to 1pm

Bank Of Scotland

Stops at Glenfarg Hotel Wednesday 10.05am -10.15am



Mobile Post Office

Stops outside the Joiner's workshop, Ladeside

Mon 11am-12noon;

Wed 11am-12noon;

Tues 12.45pm- 2.15pm;

Fri 12.45pm - 2.15pm



Recycling Points

Glenfarg: Arngask School car park for cans, paper and glass

Kinross: Causeway Car Park, Sainsbury's, Station Road, for cans, glass, paper and textiles.

Bridgend Industrial Estate Open Mon-Fri 9am-7pm, Sat-Sun 9am-5pm

Milnathort: Thistle Inn, Black Loan for cans, glass and paper

Orwell & Portmoak Church Office for cans, plastic, paper and ink cartridges

Perth: Tesco, Edinburgh Road for cans, glass, paper, textiles and books

Kerbside Recycling Service: Waste Collection Dates

Glenfarg

Green lidded bin (Non-recyclable waste)

Fridays: August 3rd, 17th & 31st, September 14th & 28th

Blue lidded bin (Paper, cardboard, cans, plastic)

Fridays: August 10th & 24th, September 7th & 21st

Brown lidded bin (Garden & food waste):

Thursdays: August 2nd, 16th & 30th, September 13th & 27th

Duncruevie

Green lidded bin (Non-recyclable waste):

Thursdays: August 2nd, 16th & 30th, September 13th & 27th

Blue lidded bin (Paper, cardboard, cans, plastic):

Thursdays: August 9th & 23rd, September 6th & 20th

Brown lidded bin (Garden & food waste):

Saturdays: August 4th & 18th, September 1st, 15th & 29th

